



**HAL**  
open science

## Present status of the ALTO project

D. Verney

► **To cite this version:**

D. Verney. Present status of the ALTO project. International Symposium on Exotic Nuclei EXON 2006, Jul 2006, Khanty-Mansiysk, Russia. pp.385-395, 10.1063/1.2746615 . in2p3-00126965

**HAL Id: in2p3-00126965**

**<https://hal.in2p3.fr/in2p3-00126965>**

Submitted on 27 Jan 2007

**HAL** is a multi-disciplinary open access archive for the deposit and dissemination of scientific research documents, whether they are published or not. The documents may come from teaching and research institutions in France or abroad, or from public or private research centers.

L'archive ouverte pluridisciplinaire **HAL**, est destinée au dépôt et à la diffusion de documents scientifiques de niveau recherche, publiés ou non, émanant des établissements d'enseignement et de recherche français ou étrangers, des laboratoires publics ou privés.

# Present status of the ALTO project

D. Verney\* and the ALTO Collaboration\*

\**Institut de Physique Nucléaire, CNRS-IN2P3/Univ. Paris Sud-XI, F-91406 Orsay Cedex, France*

**Abstract.** The Institute of Nuclear Physics of Orsay has built in the Tandem building an ISOL device based on photofission induced by a 50-MeV electron-beam : ALTO (Accélérateur Linéaire auprès du Tandem d'Orsay). The project has been dimensioned to obtain  $10^{11}$  fissions/s inside an  $UC_x$  target. The objective of this facility is twofold : ensure the development of the physics with beams at extraction-energy of fission products and to serve as a test bench for certain aspects of the R&D for the SPIRAL2 project. The first electron beam has been extracted from the LINAC in december 2005 and a  $UC_x$ -target/ion-source ensemble has been irradiated for the first time in june 2006. The effective yields of the non-refractory fission fragments after extraction and mass separation have been measured during this experiment and are similar to the calculated predictions.

## INTRODUCTION

The last decade have seen a strong scientific interest in the production and the acceleration of radioactive nuclear beams (RNBs) and many RNB facilities are being constructed or are passing into advanced phases of design study throughout the world *e.g.* the SPIRAL2 project at GANIL [1] and the EURISOL project in Europe [2]. The production of intense beams of neutron-rich nuclei is particularly challenging. It would give access to the vast untouched field of potential discoveries still to be explored on the neutron-rich side of the  $\beta$ -valley. One of the most efficient way to produce intense beams of medium-mass neutron-rich nuclides is to use fission of heavy elements like uranium. However it has been realized in the early stages of the SPIRAL2 design study that the production in ISOL-type conditions of fission rates order of magnitudes higher than those obtained in the previous generation facilities was a major technical issue and would necessitate a large R&D effort. Some of these R&D issues of the SPIRAL2 project could be studied in detail on the Orsay based fast-neutron fission induced ISOL setup named PARRNe (Production d'Atomes Radioactifs Riches en Neutrons) using the 14-MeV deuteron beam delivered by the Tandem [3, 4, 5, 6] (and Refs. therein). In the continuity of the R&D program realized using the PARRNe setup and after the success of an exploratory experiment performed at CERN using photofission [7] it has been decided to start a conceptual project for the installation at IPN-Orsay of a 50-MeV electron accelerator : the ALTO project (French acronym for Linear Accelerator at the Orsay Tandem). In our configuration, the  $^{nat}UC_x$  pellets are exposed to the  $\gamma$ -flux generated by the interaction of the incident electron beam with the target container itself (*i.e.* part of the target serves as a converter).

The first electron beam was extracted from the accelerating section in december 2005. In june 2006 a  $UC_x$  target-ion source ensemble was irradiated for the first time. The non-refractory fission products where extracted from the target, singly ionized and

magnetically mass separated. The effective yields of the different fission-fragments were then measured by  $\gamma$ -spectrometry. An overview of the major points of the ALTO project is reported in the following sections as well as well an overview of the experimental results obtained in june 2006.

## THE ELECTRON DRIVER

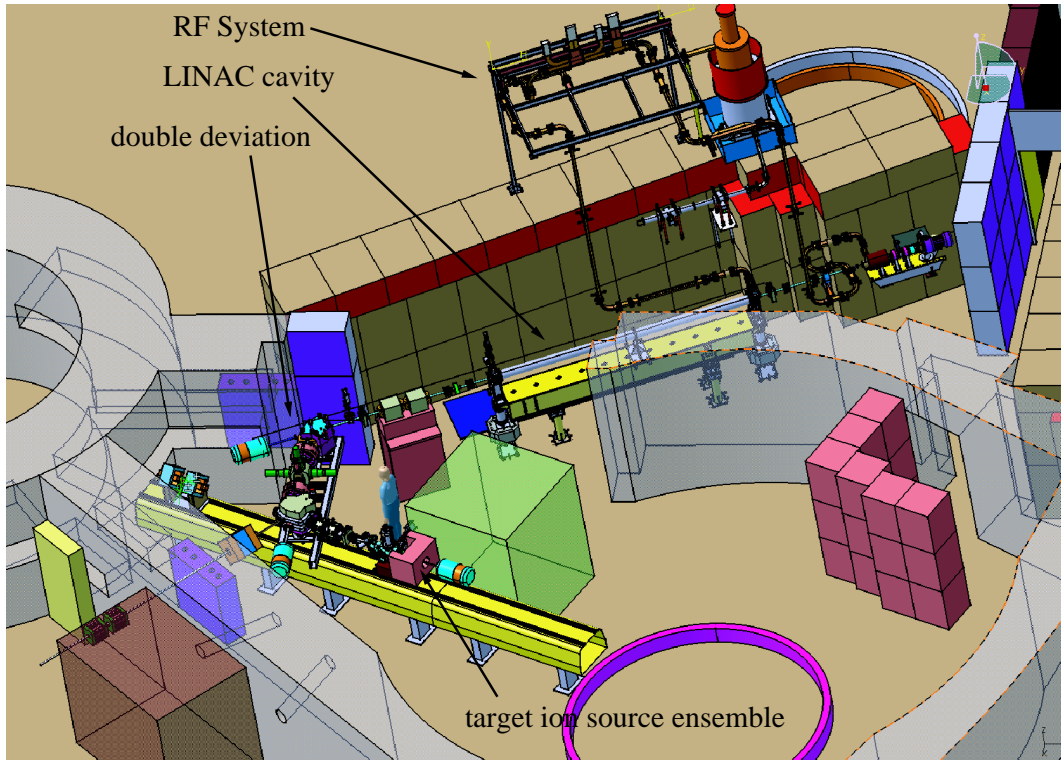
It has been shown that the ratio of the number of fission of  $^{238}\text{U}$  per incident electron tends to saturate from 30-MeV incident electron-beam energy and reaches saturation at 50-MeV [8]. This is due to the matching between the energy distribution of the Bremsstrahlung  $\gamma$ -spectrum and the energy shape of the  $^{238}\text{U}$  giant dipole resonance (maximum cross section is 160 mb at 15 MeV). 50-MeV was then naturally chosen for the energy of the electron-driver. The main component of this driver consists in a linear accelerating section ceased to us by the CERN scientific authorities after the success of the experiment described in Ref. [7]. Other missing elements were given by the LAL (Orsay). The LINAC optimal working conditions for producing photofission are :

RF frequency	:	2998.55 MHz
Repetition rate	:	100 Hz
Output average current	:	10 $\mu\text{A}$
Output energy	:	50 MeV

The accelerator length is about 12 m. Fig. 1 shows a schematic view of the implantation of ALTO inside the Tandem beam areas. The driver is composed of the succession of an e-gun, a pre-buncher, a buncher, the accelerator section and an achromatic double-deviation beam-line. This double-deviation curves the electron trajectory in order to join the former Tandem deuteron beam line. The target ion-source ensemble is placed at the *same* position as during the fast-neutron induced fission PARRNe experiments hence the mass-separator was maintained also at the same position.

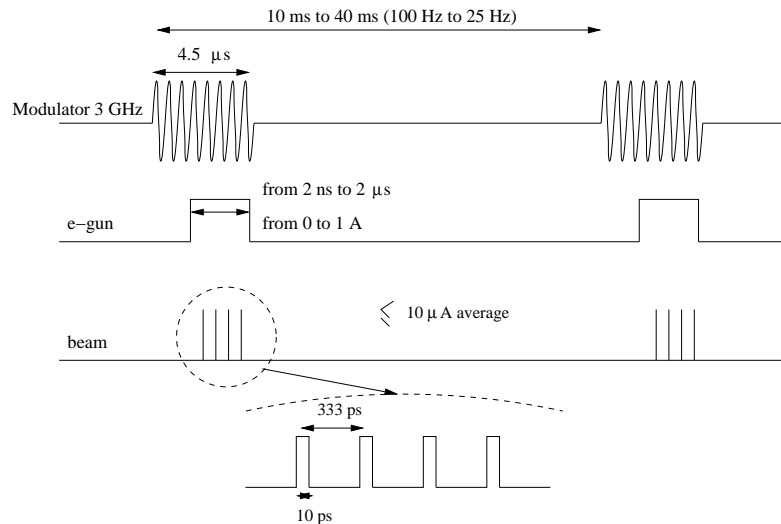
### *The LINAC and RF system*

The RF system is based on the use of a THALES klystron (TH2100) and a modulator from LAL. The 3 GHz klystron delivers a 4.5  $\mu\text{s}$  RF pulse and provides a peak power of 35 MW. The accelerating section works in the  $2\pi/3$  TW mode with quasi-constant field gradient. This section (which is the cavity recovered from the decommissioned LEP injector) provides an energy gain of 46 MeV for only 9 MW input RF power. The RF distribution allows to deliver the suitable power for a klystron power of 30 MW. The filling time of the section is 1.35  $\mu\text{s}$  and the energy dispersion is 8% for a current pulse of 50 mA. The buncher is a triperiodic structure working in standing wave mode at 3 GHz. An appropriate time allows to reduce the energy spread in the buncher. The pre-buncher allows to improve the time structure of the beam in the buncher. Simple calculations (confirmed by simulation) give optimal bunching for a power of 1 kW in the cavity. A classical triode thermionic gun operating between 80 kV and 90 kV produces variable

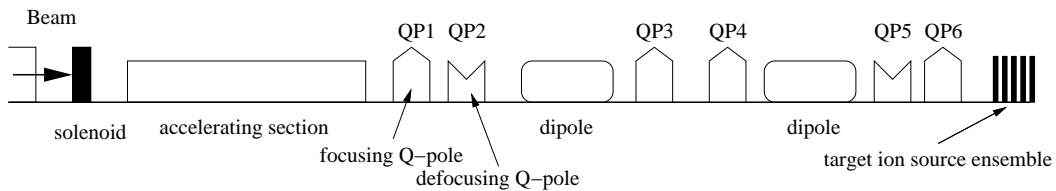


**FIGURE 1.** Implantation scheme of the LINAC and double beam deviation in the Tandem building.

pulses ( $0.2 \mu\text{s}$  to  $3 \mu\text{s}$ ). The peak current which is normally achieved is typically 3A but for our purpose the cathode is voluntarily under heated for delivering only 60 mA in order to minimize the current fluctuation during the pulse. To minimize the beam loading in the accelerating section, we choose to function at maximum pulse length. With  $3 \mu\text{s}$  pulse at 100 Hz the beam loading is 4 MeV for an energy of 50 MeV. During the first test-runs the intensity was maintained at 100 nA for safety reasons. Simulations showed that it should correspond to  $10^9$  fissions/s inside the target which was the rate routinely obtained during the PARRNe deuteron-induced fission experiments (details on the radiological conditions of the june 2006 test-run are give in a following section) . We have also reduced the repetition frequency at 10 Hz and operate with 250 ns pulse duration. The time structure of the electron beam is displayed in Fig. 2. Transmission between gun and entrance section is 77 % (81% theoretical), and transmission in the section is 96%. The bad transmission in the deviation was traced back to a perturbation in the magnetic field created by an ionic pump close to the line which has been removed since.



**FIGURE 2.** Structure of the ALTO electron beam.



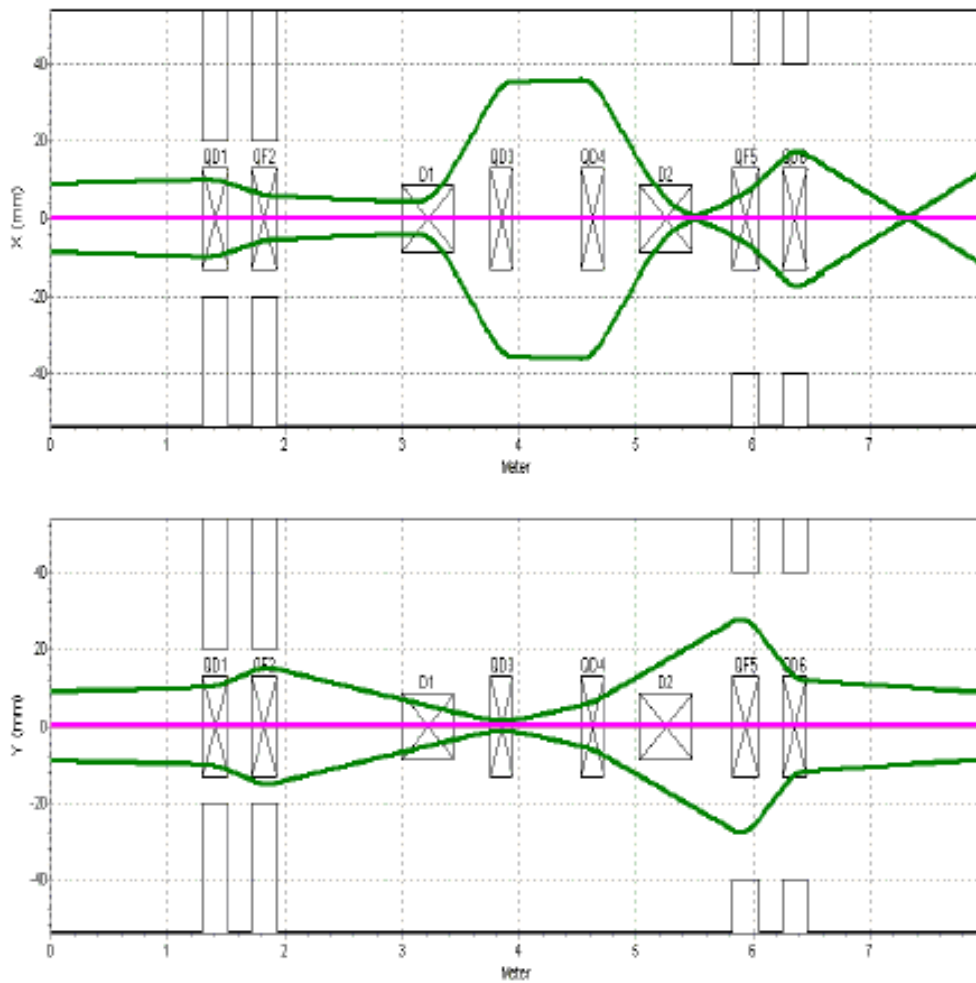
**FIGURE 3.** Principle scheme of the electron driver ALTO.

### *The double-deviation line and beam diagnostics*

The achromatic double-deviation line following the linear accelerating section has three purposes :

- optimize the implantation of the LINAC in the Tandem experimental areas;
- insure a certain modularity in the use of the electron beam : after the first deviation the electron beam can be sent to a dedicated line, after the second deviation it regains a the former path of the Tandem deuteron beam for irradiation of the  $UC_x$  target ;
- place beam diagnostics.

The designed beam line consists of two  $65^\circ$  dipole magnets ( $R=0.4m$ ) and six magnetic quadrupoles (see Fig. 3). The first quadrupole doublet at the output of the accelerating section allows the control of the beam envelope at the entrance of the first dipole (see Fig. 4). To achieve the achromaticity of the deviation, two quadrupoles are put between the two dipoles. Between these two quadrupoles a mobile slit which allows to measure the energy dispersion by position tuning. The beam dimension on the  $UC_x$  target container is adjusted using the last quadrupole doublet (see Fig. 4). There are three types of current

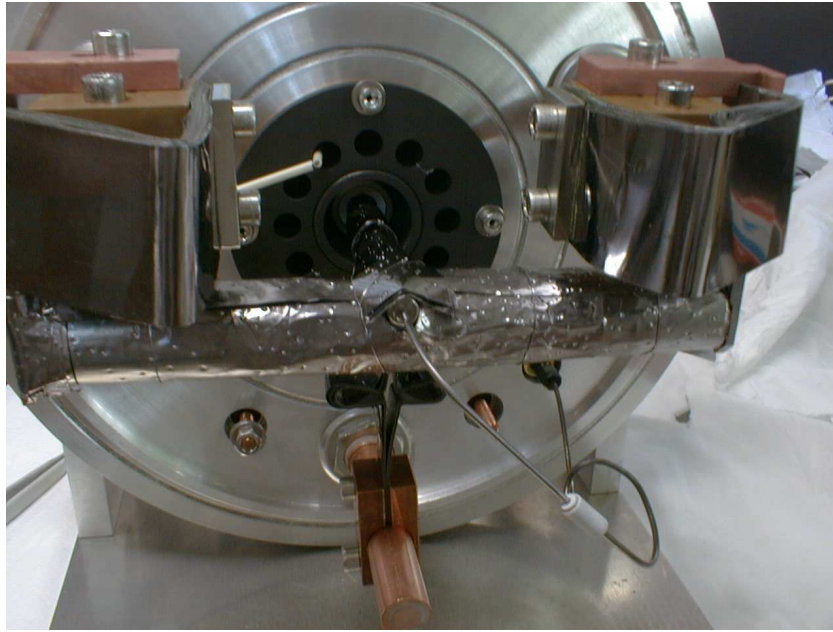


**FIGURE 4.** Electron beam envelopes in the double deviation line (TRACE-WIN calculation) taken from [9].

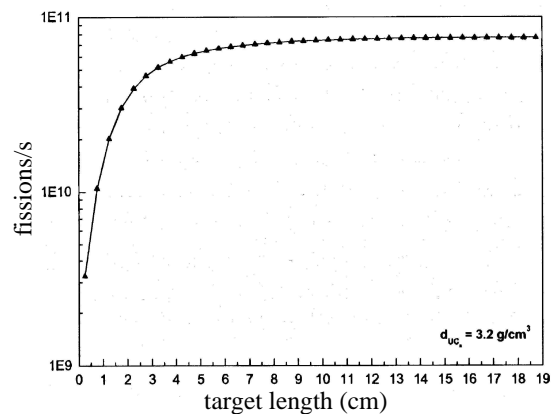
diagnostics :

- two Wall Current Monitor (WCM) which are resistive monitors
- three current transformers (TI)
- two beam stop (BS) with faraday cages and magnets in order to capture secondary electrons.

Three beam position monitors (BPM) have been taken from the Linac Injector of LEP/CERN. These BPM are the magnetic monitors. At last (and the most spectacular) we also use a system composed with a CCD monitoring the fluorescence light from a crystal when it is put into the beam path.



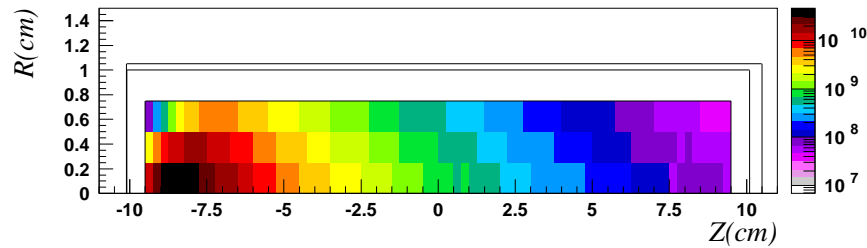
**FIGURE 5.** The target ion-source ensemble.



**FIGURE 6.** Total number rate of fission inside the target as a function of the target length (from Ref. [14]).

## TARGET-ION SOURCE ENSEMBLE

To produce neutron-rich nuclei by photofission, a thick target containing 72 g of uranium in a standard form of  $UC_x$  is used. The target is made of a series of  $UC_x$  pellets with a total length  $\simeq 19$  cm. It is placed in a graphite container which is surrounded by a Ta oven with a thickness of 0.5 mm and heated up to about 2000 °C. Details of this target properties can be found in [10]. A picture of the target ion-source ensemble is shown in Fig. 5. The absolute density of the  $UC_x$  pellets is 3.5 g/cm<sup>3</sup>, however, due to spacings between the pellets the effective overall density is reduced to 3.2 g/cm<sup>3</sup>. A



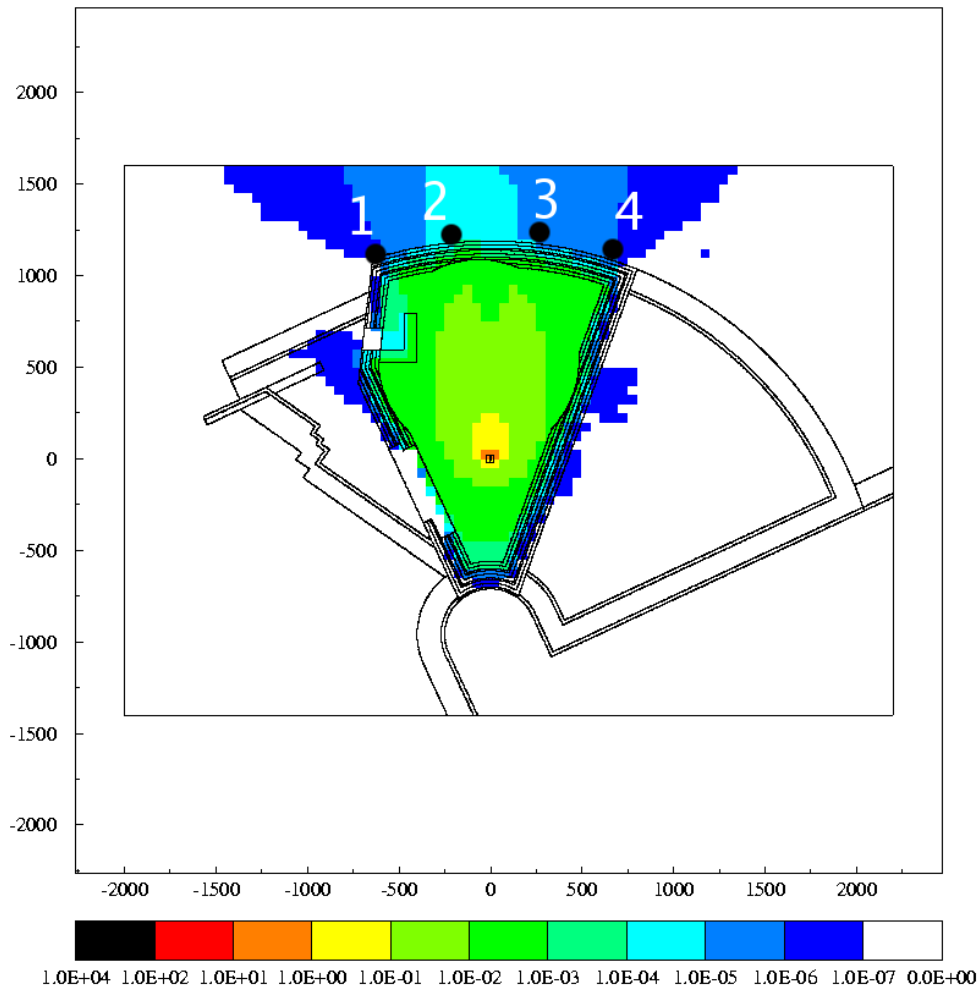
**FIGURE 7.** Simulation of the distribution of the fission rate in the  $UC_x$  target in number of fissions/cm<sup>3</sup>/s for an incident electron beam of 10  $\mu$ A at 50 MeV (the assumed target density is 3.2g/cm<sup>3</sup>).

simulation using the FLUKA code [13, 14] shows that the 50-MeV incident electrons lose the major part of their energy after a mean path of 2.65 cm inside the target. One can see in Fig. 6 that the fission rate inside the targets tends to saturate with the target length. The saturation is reached for a target length of  $\simeq 7$  cm. The results from the simulation for the spacial distribution of the fission rate inside the target is shown in Fig. 7 : it is clear that the major part of the photofission events take place in the first few centimeters of the target. Since the hole which connects the target container to the ion source is pierced in the middle of the container (0 cm coordinate in Fig. 7) it is conceivable that this could have a significant influence on the effective release times for certain elements. This may explain part of the differences between the measured yields obtained in june 2006 (electron induced fission) and those obtained in december 2000 (fast neutron induced fission). A systematic comparison of the measured yields between the two experiments is presented and discussed in [11]. During the test-run of june 2006 the target was connected to a hot plasma ion-source of the MK5 ISOLDE type [12] in order to be in the closest conditions as possible with the equivalent test-run using the deuteron beam which was realized in december 2000 [10].

## SAFETY ASPECTS

For safety reasons, the test-run of june 2006 had to be realized in radiological conditions similar to those encountered during the preceding fast neutron experiments *i.e.* similar dose rates inside the Tandem experimental rooms (and actually similar fission rate inside the target). These running conditions were then carefully simulated before the experiment [14]. Using the FLUKA code, *efficient* dose rates induced by  $\gamma$ -rays were simulated for the regions inside and in the close vicinity of the cave 210 of the Orsay Tandem induced by a 100 nA electron beam hitting the  $UC_x$  target and the subsequent photofissions. In Fig. 8 are represented mean values of the simulated *efficient* dose rates. These values correspond to an average of the *efficient* dose rate over 1 m in vertical direction around the beam position. During the experiment the *equivalent* dose rates were measured at the height of the beam in four positions immediately situated behind the cave 210 shielding (one should remind that by definition  $\frac{equiv.}{effic.} \geq 1$ ). This measurement



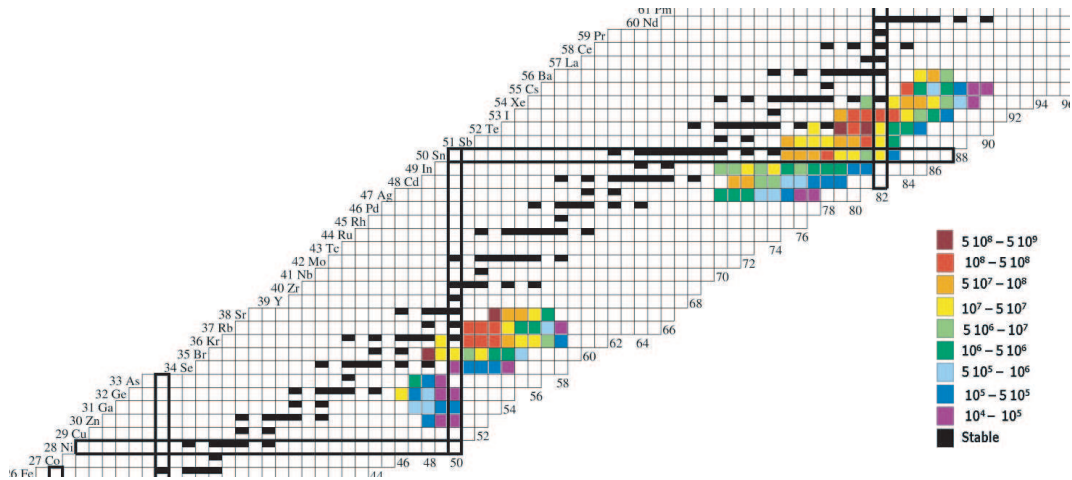


**FIGURE 8.** Simulation of the distribution of the efficient dose rates in and around cave 210, dose rates on the scale are given in Sv/hour (taken from [14]). Vertical and horizontal scales on the map are in cm.

points are indicated by the numbered dots in Fig. 8. The measured values are reported in Tab 1. One can see that the agreement with the prediction from simulation is excellent. This good agreement gives us confidence in the shielding as it has been dimensioned and designed for the  $10\mu A$  nominal electron beam.

**TABLE 1.** *Equivalent* dose rates due to  $\gamma$ -ray measured during the test-run of June 2006 ( $\mu\text{Sv/h}$ ).

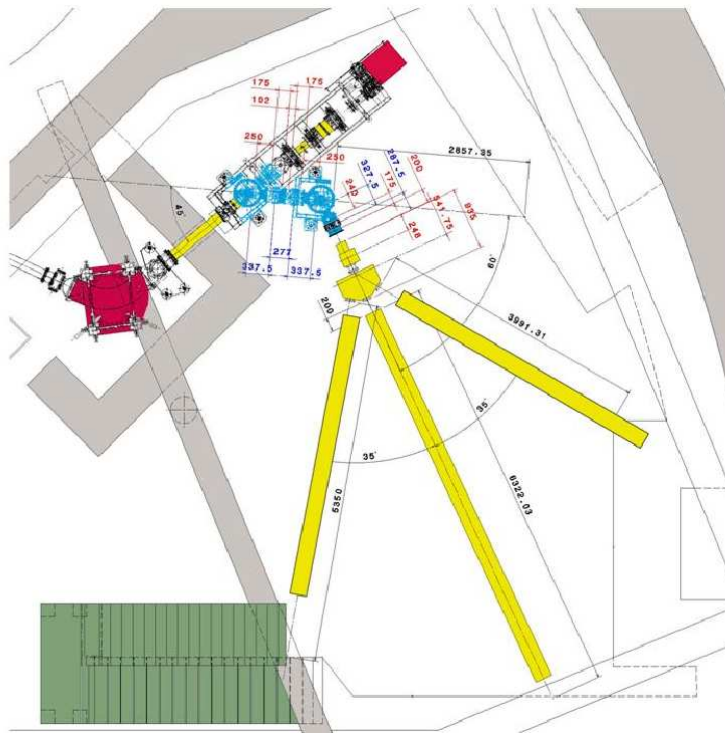
position on Fig. 8	equivalent dose ( $\mu\text{Sv/h}$ )
1	4
2	200
3	34
4	6



**FIGURE 9.** Yields of fission-fragments in number of ion/s after extraction and mass separation measured at ALTO with an e-beam intensity reduced to 100 nA (instead of the nominal 10  $\mu\text{A}$ ).

## MEASURED BEAM INTENSITIES AT ALTO ( $I_{E^-}=100 \text{ NA}$ )

The intensities of the different mass-separated fission-product beams were characterized on the PARRNe beam line. The beam was collected on a mylar tape and the activities of the different collected isotopes were quantified by detection and identification of the characteristic  $\gamma$ -rays. Details of the experimental setup and the measurement procedures are found in [11]. Masses from  $A=78$  to 95 and  $A=117$  to 144 (plus  $A=160$ ) were systematically studied. Comparison with the intensities previously measured in the fast-neutron induced experiment of December 2000 shows that the order of magnitude is the same as with a primary beam of 14-MeV deuterons of  $1 \mu\text{A}$  and a primary beam of 50-MeV electrons of 100 nA. These measured yields happen to be in good agreement with both numerical simulations and empirical estimates [11]. Hence we expect from now on to reach yields of mass-separated fragments 10 to 100 times higher by simply increasing the electron beam intensity of a factor 100 and *without* special efforts on the source efficiency and target release times. The intensities measured in the test-run of June 2006 are summarized in Fig 9.



**FIGURE 10.** Layout of the ALTO beam lines after the mass-separator in room 110 of the Orsay Tandem. The beam is taken from the mass separator focal plane, deviated twice and distributed toward three beam lines. The angle between the central line and the first deviation direction is  $60^\circ$ .

## SHORT TERM OUTLOOK

The short term (year 2007) program for the development of the ALTO facility is the following :

- shielding of the target ion source ensemble ;
- development of a surface-ionization source ;
- off-line test of laser ionization configurations for different key elements, installation of the laser system on the dedicated mezzanine for the constitution of the laser ion source ;
- increase step-by-step of the electron intensity, measurement of the dose rate inside the Tandem experimental areas to obtain the authorization to run with full electron beam intensity from our Safety Authorities ;
- progressive building of the three beam lines after the mass separator in room 110 of the Tandem (PARRNe line room, see Fig. 10).

## ACKNOWLEDGMENTS

We are grateful to the members of the Radio-safety Service of the Institute for their crucial help during this experiment. This work was entirely supported with public funds provided by IN2P3/CNRS, Le Conseil Régional Ile de France, Le Conseil Général du Département de l'Essonne and the Ministry of Research.

## REFERENCES

1. M. Lewitowicz, contribution to these Proceedings.
2. <http://www.eurisol.org/>
3. B. Roussière *et al.*, *Nucl. Instrum. and Meth.* **B194**, 151–163 (2002).
4. B. Roussière *et al.*, *Nucl. Instrum. and Meth.* **B246**, 288–296 (2006).
5. C. Lau *et al.*, *Rev. Sci. Instrum.* **77**, 03A706 (2006).
6. Bajeat O. *et al.* *Nucl. Instrum. and Meth.* **A562**, 634–637 (2006).
7. F. Ibrahim *et al.* *Eur. Phys. J.* **A15** 357 (2002).
8. Yu. Ts. Oganessian *et al.* *Nucl. Phys.* **A701** 87c–95c (2002).
9. S. M'garresh, Thesis, Université Paris Sud-XI (2004), unpublished
10. C. Lau *et al.*, *Nucl. Instrum. and Meth.* **B204**, 246–250 (2003).
11. M. Lebois *et al.*, contribution to these Proceedings
12. S. Sundell, H.L. Ravn and the ISOLDE collaboration, *Nucl. Instrum. and Meth.* **B70**, 160 (1992).
13. A. Fassó *et al.*, “The physics models of FLUKA: status and recent developments” in *Computing in High Energy and Nuclear Physics 2003 Conference (CHEP2003), La Jolla, CA, USA, 2003*, eConf C0303241:MOMT005 and A. Fassó, A. Ferrari, J. Ranft, and P.R. Sala, “FLUKA: a multi-particle transport code”, CERN-2005-10 (2005), INFN/TC\_05/11, SLAC-R-773
14. M. C. Mhamed, Thesis, Université d'Evry Val d'Essonne (2006), unpublished