



**HAL**  
open science

## A new algorithm for large surfaces profiling by fringe projection

S. Pavageau, Richard Dallier, Noël Servagent, T. Bosch

► **To cite this version:**

S. Pavageau, Richard Dallier, Noël Servagent, T. Bosch. A new algorithm for large surfaces profiling by fringe projection. 17th European Conference on Solid-State Transducers, Sep 2003, Guimaraes, Portugal. pp.178-184, 10.1016/j.sna.2003.12.030 . in2p3-00025260

**HAL Id: in2p3-00025260**

**<https://hal.in2p3.fr/in2p3-00025260>**

Submitted on 18 Jan 2006

**HAL** is a multi-disciplinary open access archive for the deposit and dissemination of scientific research documents, whether they are published or not. The documents may come from teaching and research institutions in France or abroad, or from public or private research centers.

L'archive ouverte pluridisciplinaire **HAL**, est destinée au dépôt et à la diffusion de documents scientifiques de niveau recherche, publiés ou non, émanant des établissements d'enseignement et de recherche français ou étrangers, des laboratoires publics ou privés.

# A new algorithm for large surfaces profiling by fringe projection

S. Pavageau<sup>a</sup>, R. Dallier<sup>a</sup>, N. Servagent<sup>a</sup>, T. Bosch<sup>b,\*</sup>

<sup>a</sup> Ecole des Mines de Nantes, 4 rue Alfred Kastler, BP 20722, 44307 Nantes Cedex 3, France

<sup>b</sup> ENSEEIHT-LEN7, Laboratoire d'Electronique, 2 rue Charles Camichel, BP 7122, 31071 Toulouse Cedex 7, France

---

## Abstract

A method for profiling surface objects based on the fringe projection method and a phase shifting algorithm is described. The application of this method to large surfaces is problematic since the calibration step requires the use of a reference plane as large as the object. A new algorithm based on least-squares method has also been developed to bypass this calibration step, and so the use of a reference plane. First experimental results on a carbon panel and on a parabolic aerial are presented to show the validity of the proposed algorithm. Accuracy of 1 mm has been obtained for an object of 1 m and 20 cm long, while sensitivity has been proved to be of the order of 100  $\mu\text{m}$ .

*Keywords:* Fringe projection; Phase shifting; Profilometry; Object reconstruction

---

## 1. Introduction

Several optical methods exist, which can be employed for the determination of object shapes and profiles [1]. They have the advantages of being non-contact, and rapidly acquiring spatially dense data on large and small surfaces. This article presents a shape measurement method for large and flat surfaces based on the technique of fringe projection. This application forms part of an important stage of a wider research project (ALICE), dedicated to fundamental research in particle physics [2], and requires the building of a large detector system whose structural elements are carbon sandwich panels. Controlling the flatness of these large panels (2450 mm  $\times$  450 mm) is thus essential. The flatness, directly derived from the profile map is defined as the maximum distance between two perfect, parallel reference planes between which is placed the surface of interest. In order to guarantee relatively acceptable results from the whole fundamental experiment of the project ALICE, and according to conventional mechanical standard abacus, the flatness of these panels must be better than 150  $\mu\text{m m}^{-1}$ .

The fringe projection method has been widely exploited for small object measurements [3]. However, due to some inherent calibration difficulties (principally the need for a reference plane as large as the object surface), relatively few

published work have been reported on large area measurements using this method [4]. We report in this paper a new algorithm, based on least-squares method, which permits the profile of objects to be reconstructed with relative ease. The use of a physical reference plane is no more required. Theoretically, the algorithm may be applied for profiling objects of any arbitrary size. The theory and principles associated with our proposed method are thus discussed.

## 2. Fringe pattern analysis

Sinusoidal fringes are projected onto the object from one direction and viewed with a CCD camera from another direction (Fig. 1). These fringes are obtained by direct illumination of an optical grating and projected onto the object whose profile is to be determined. For object surfaces which are deformed, the phase of the projected fringes, and hence, their intensities are modulated accordingly.

This resulting intensity distribution is then recorded by the CCD camera and can be given by the following expression:

$$I(x, y) = a(x, y) + b(x, y) \cos[\phi(x, y)] \quad (1)$$

where  $a(x, y)$  and  $b(x, y)$  are the fringe pattern average and modulation intensities and  $\phi(x, y)$  is the phase containing the surface relief deformation.

To extract the phase  $\phi(x, y)$  from the intensity distribution, we use a phase shifting method, where the phase is calculated for each pixel.

---

\* Corresponding author. Tel.: +33-561-588-282; fax: +33-561-588-237.  
E-mail address: bosch@len7.enseeiht.fr (T. Bosch).



$$\phi_{\text{expA}_i} = \phi_{\text{thA}_i} \quad \phi_{\text{expB}_i} = \phi_{\text{thB}_i} \quad \phi_{\text{expC}_i} = \phi_{\text{thC}_i} \quad (3)$$

5. Concretely, in order to achieve the best possible approximation of the parameters, we exploited a minimizing function given by

$$F(\alpha, \varphi, d) = |\phi_{\text{thA}}(\alpha, \varphi, d) - \phi_{\text{expA}}|^2 + |\phi_{\text{thB}}(\alpha, \varphi, d) - \phi_{\text{expB}}|^2 + |\phi_{\text{thC}}(\alpha, \varphi, d) - \phi_{\text{expC}}|^2 \quad (4)$$

where  $\phi_{\text{expA}}$ ,  $\phi_{\text{expB}}$ ,  $\phi_{\text{expC}}$  are the measured phases at points A, B, C, respectively, during fringe projection and  $\phi_{\text{thA}}$ ,  $\phi_{\text{thB}}$  and  $\phi_{\text{thC}}$  are the corresponding calculated phases.

The surface height for an individual plane,  $z_i$ , can thus be calculated as a function of the geometrical parameters,  $\alpha_i$ ,  $\varphi_i$  and  $d_i$ . Subsequently, the height values for other elementary planes,  $z_{i+1}, \dots, z_{i+n}$ , can be similarly calculated. The entire surface profile of the object can finally be reconstituted from the calculated heights of all elementary planes.

In the following sections, the first experimental results will be presented to show the validity of our algorithm.

Processing of the acquired data is carried out via a program written in Matlab<sup>®</sup>.

#### 4. Experimental results

The configuration of the experimental setup is illustrated in Fig. 2. The projector, which has been built in our laboratory, consists of a tungsten-halogen lamp illuminating a grating to allow projection of the fringes on the object under test. A sinusoidal grating with a pitch of 0.2 mm has

been employed. It is translated using a motorized translation stage controlled by a program written in Labview<sup>®</sup> to produce the desired phase-shift.

In order to correctly calculate the phase map, seven intensity maps obtained by the phase shifting technique are recorded. Note that a phase-shift of  $\pi/2$  has been introduced between each intensity map (corresponding to a 50  $\mu\text{m}$  transverse displacement of the grating in this case). This phase-shift is considered to be relatively constant since each motor step is only 15 nm. Moreover, as previously mentioned, the WDFT algorithm used for phase determination is relatively insensitive to any phase mismatch.

The deformed fringe patterns on the object surface are next captured by a CCD camera (1035  $\times$  1317 pixels, 12 bits coding).

The projector is located at a distance  $L_E \approx 6$  m from the object with a measured projection angle of  $38.75^\circ$  while the camera has been positioned at  $L_R = 4.5$  m with a receiving angle of  $23.25^\circ$ . By exploiting this configuration, a field of view of  $\approx 1.2$  m in length can be visualized.

##### 4.1. Carbon panel

The setup has been first developed to verify the flatness of black carbon panels of large dimensions (up to 2450 mm  $\times$  450 mm). The carbon panels have to be held vertically, in order to overcome the problem of deformation under their own weight. A system of three contact points was used for this purpose. A preliminary test was realized on a 1250 mm  $\times$  450 mm carbon panel and its resulting 3D contour map is shown in Fig. 3. A peak-to-valley distance of approximately 1 mm has been obtained.

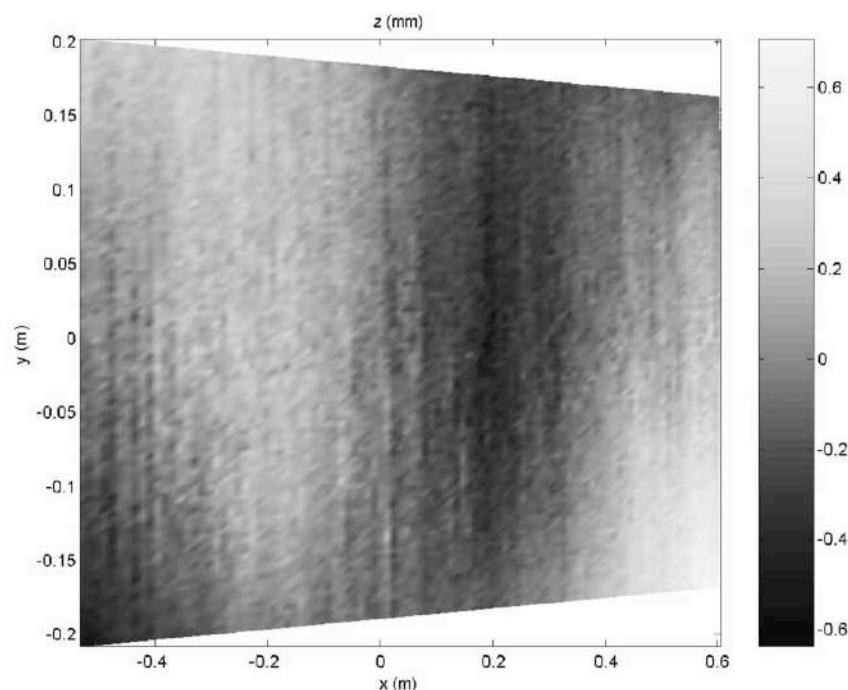


Fig. 3. 3D contour map of a 1250  $\times$  450 carbon panel (scale in mm; the trapezoidal form is due to perspective correction).

The same panel was also tested with an opto-mechanical setup we have previously developed [7], where a peak-to-valley distance of  $150\ \mu\text{m}$  has been found. This last measurement can be considered as a reference.

The discrepancies between the two measurements can be explained as follows. In fact, the profile obtained using structured light projection principally results from imperfections in the imaging system (optical distortion). Indeed, during simulations, where no optical distortion was introduced, the influence of the geometrical parameters (introduced errors of 1 cm for  $L_E, L_R, 1^\circ$  for  $\beta, \theta, \dots$ ) was found to be negligible. However, in practice, optical distortion exists and leads to degradations of the measurement accuracy. This is the main source of uncertainties in our setup. Note that we have used a seven-lens, commercial videoprojection objective, whose optical imperfections cannot be easily calculated nor measured. An improvement of the projection system would then be the design of a dedicated and completely known optical system, although this constitutes an expensive solution.

Currently, with the systematic warp of 1 mm, which degrades the accuracy of the setup, it is impossible to map the carbon panels and so, to measure their flatness. However the sensitivity of the setup has been demonstrated by carrying out relative measurements. By relative measurement, we mean that we subtract this warp whose profile is given in Fig. 3 from each newly reconstructed object profile.

To illustrate the results from these measurements, we placed an A3 size sheet of paper on the same panel. The paper thickness has been estimated to be  $110 \pm 10\ \mu\text{m}$  using a vernier caliper. A new set of seven images are next recorded. Finally, the profile of the panel is subtracted from the obtained profile incorporating the sheet of paper. Fig. 4 shows

the 3D reconstruction of the paper thickness. The calculated thickness, taking into account both the paper itself as well as the fine film of adhesive used ( $\approx 20\ \mu\text{m}$ ), is approximately  $155\ \mu\text{m}$ .

Most importantly, Fig. 4 illustrates that the system can be employed to resolve details of  $\approx 150\ \mu\text{m}$  in height within a large observation field of  $1200\ \text{mm} \times 450\ \text{mm}$ . In addition, measurements can be considered as highly repeatable, since a reference set of data can be subtracted, at a later time, from images taken under the same conditions.

#### 4.2. Elliptic paraboloid

In the first example, our algorithm is used on the flatness measurement of carbon panel, which length is more than 1 m. However, our proposed algorithm is not only restricted to the determination of planar objects. Its application can be extended to the measurement of smaller surfaces as well as large and non-planar surfaces (without shadow zone). For example, the algorithm has been tested on a parabolic aerial. The aerial is a  $850\ \text{mm} \times 950\ \text{mm}$  elliptic paraboloid, white and mat,  $80 \pm 1\ \text{mm}$  height and is held vertically by a aluminum support. The same setup configuration (angle, distance, etc.) as for carbon panel is kept. This implies an accuracy of measurements of 1 mm.

Fig. 5 shows the reconstituted 3D contour map of the elliptic paraboloid. To point out the robustness of the algorithm, a cross-section profile of the paraboloid, passing through its top is given in Fig. 6. A height of 79 mm is obtained.

Repeatability tests have also been carried out. About ten sets of seven images have thus been recorded on the same paraboloid. The histogram shown in Fig. 7

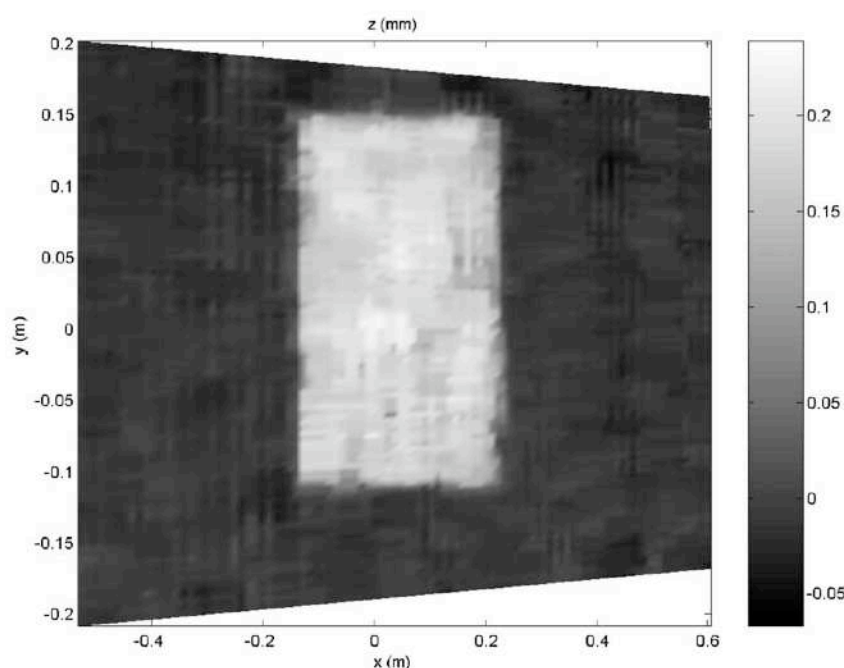


Fig. 4. 3D reconstruction of the paper thickness (scale in mm).

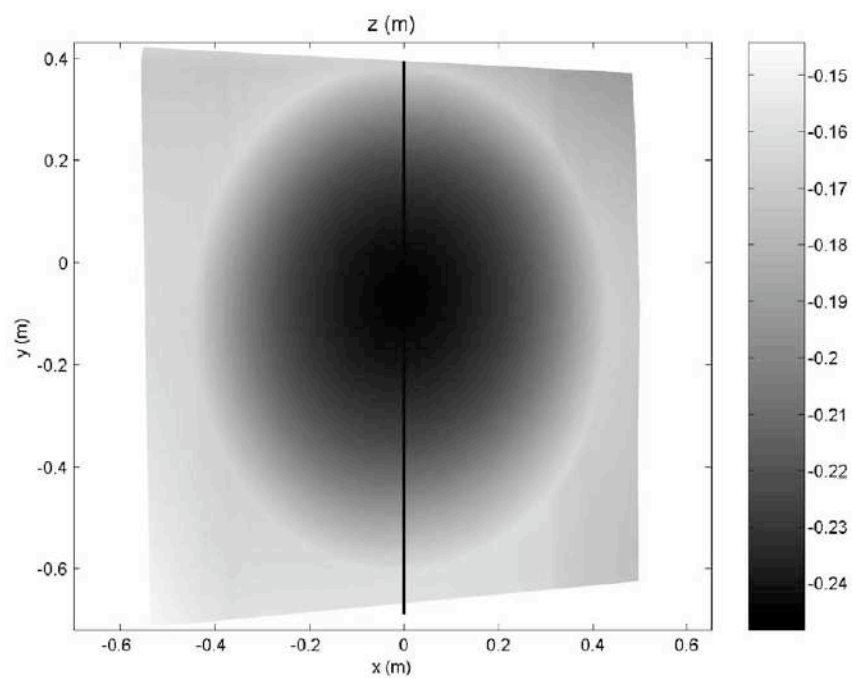


Fig. 5. 3D contour map of an elliptic paraboloid (scale in m; the trapezoidal form is due to perspective correction).

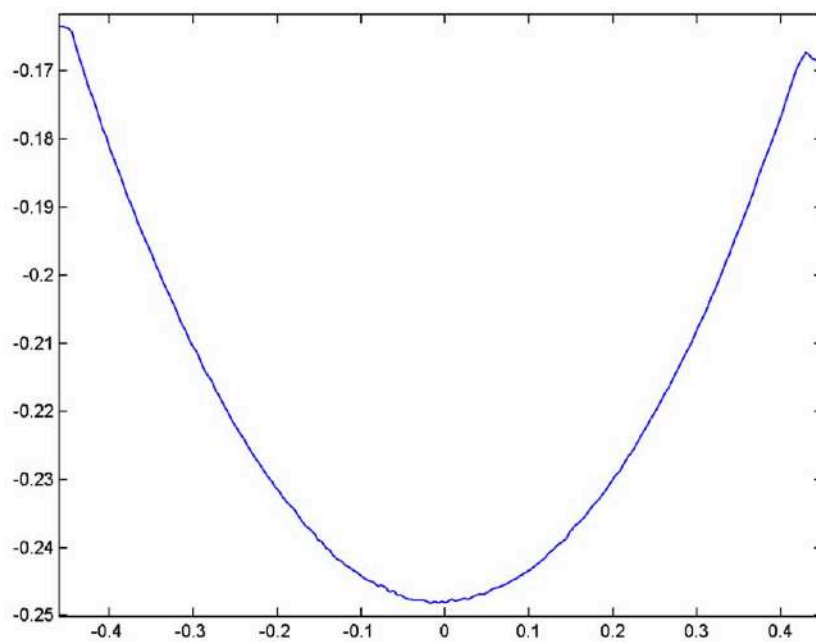


Fig. 6. A cross-section profile of the paraboloid ( $x = 0$ ).

represents the distribution of the measurements around mean value. The experimental results present an uncertainty of  $\pm 200 \mu\text{m}$ , interval corresponding to 95% of the measurements. Our setup can be considered as highly repeatable.

These first results are quite encouraging concerning the feasibility of the algorithm we have developed. However, further improvements are needed to reduce errors which de-

grade the measurement accuracy. One of the improvements would be to reduce lens distortions of the imaging system. In fact, the distortions lead to an error on the projection of the fringes and so on the measurement of the experimental phase. Reducing the distortion would decrease the uncertainty on the experimental phase. Improvement on the camera model used (optical distortion, etc.) as well as the evaluation of the influence of the setup parameters would lead to

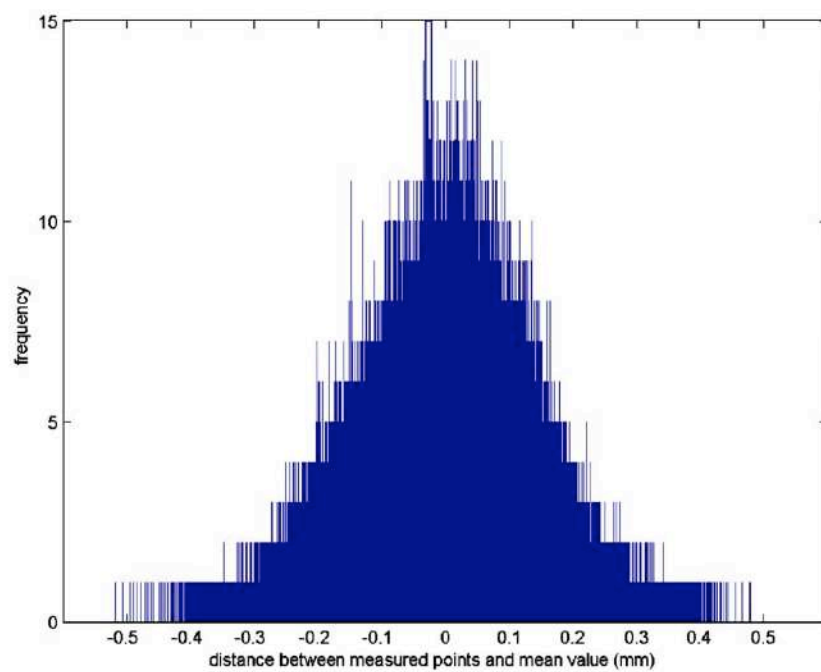


Fig. 7. Distribution histogram of distance measurement on a paraboloid.

a better determination of the theoretical phase and increase the accuracy.

## 5. Conclusion

This paper presents a method for full-field shape measurements on large surfaces by exploiting structured light projection. It is non-contact, rapid and can be easily automated. The algorithm that we have reported here in this work, was firstly developed for relatively flat surfaces. It does not require any cumbersome calibration procedures and its principal advantages are the absence of a physical reference plane and that it can be applied on all surfaces (small, large, planar and non-planar). First experiments were carried out on 1250 mm × 450 mm carbon panel and on a parabolic aerial. Unfortunately, optical distortions degrade the accuracy of the measurements, which is currently, approximately 1 mm. This prototype could be easily adapted to specific needs such as, in aerospace, automotive or shipbuilding industry.

## References

- [1] F. Chen, G.M. Brown, M. Song, Overview of three-dimensional shape measurement using optical methods, *Opt. Eng.* 39 (2000) 10–22.
- [2] ALICE collaboration, Dimuon forward spectrometer: technical design report, CERN/LHC 2000-046, addendum 1, 2000.
- [3] C. Quan, X.Y. He, C.F. Wang, C.J. Tay, H.M. Shang, Shape measurement of small objects using LCD fringe projection with phase shifting, *Opt. Commun.* 189 (2001) 21–29.
- [4] M. Lehmann, P. Jacquot, M. Facchini, Shape measurements on large surfaces by fringe projection, *Exp. Tech.* 23 (1999) 31–35.
- [5] Y. Surrel, *Fringe analysis*, Photomechanics, Springer, Berlin, 1999, pp. 55–102.
- [6] D.C. Ghiglia, M.D. Pritt, *Two-dimensional Phase Unwrapping: Theory, Algorithms and Software*, Wiley, New York, 1998.
- [7] S. Pavageau, R. Dallier, N. Servagent, T. Bosch, High accuracy optical measurement of flatness for large object, *Meas. Sci. Technol.* 14 (2003) 2121–2126.

