



HAL
open science

Status and performances of the FAZIA project

M.-F. Rivet, Eric Bonnet, B. Borderie, R. Bougault, P. Edelbruck, N. Le Neindre, S. Barlini, S. Carboni, G. Casini, E. Rosato, et al.

► **To cite this version:**

M.-F. Rivet, Eric Bonnet, B. Borderie, R. Bougault, P. Edelbruck, et al.. Status and performances of the FAZIA project. 11th International Conference on Nucleus-Nucleus Collisions, May 2012, San Antonio, Texas, United States. pp.012160, 10.1088/1742-6596/420/1/012160 . in2p3-00726984

HAL Id: in2p3-00726984

<https://hal.in2p3.fr/in2p3-00726984>

Submitted on 31 Aug 2012

HAL is a multi-disciplinary open access archive for the deposit and dissemination of scientific research documents, whether they are published or not. The documents may come from teaching and research institutions in France or abroad, or from public or private research centers.

L'archive ouverte pluridisciplinaire **HAL**, est destinée au dépôt et à la diffusion de documents scientifiques de niveau recherche, publiés ou non, émanant des établissements d'enseignement et de recherche français ou étrangers, des laboratoires publics ou privés.

Status and performances of the FAZIA project

**M F Rivet¹, E Bonnet², B Borderie¹, R Bougault³, P Edelbruck¹,
N Le Neindre³, S Barlini⁴, S Carboni⁴, G Casini⁴, E Rosato⁵,
G Tortone⁵ for the FAZIA Collaboration**

¹ Institut de Physique Nucléaire, CNRS-IN2P3 and University Paris-Sud 11, F-91406 Orsay France

² GANIL, CEA-DSM/CNRS-IN2P3, F-14076 Caen Cedex, France

³ Laboratoire de Physique Corpusculaire, CNRS-IN2P3, ENSICAEN and University of Caen F-14050 Caen France

⁴ Università di Firenze and INFN Sez. Firenze, I-50019 Sesto Fiorentino, Firenze, Italy

⁵ Dipartimento di Scienze Fisiche e Sezione INFN, Università di Napoli "Federico II", I-80126 Napoli, Italy

E-mail: rivet@ipno.in2p3.fr

Abstract. FAZIA is designed for detailed studies of the isospin degree of freedom, extending to the limits the isotopic identification of charged products from nuclear collisions when using silicon detectors and CsI(Tl) scintillators. We show that the FAZIA telescopes give isotopic identification up to $Z \sim 25$ with a ΔE -E technique. Digital Pulse Shape Analysis makes possible elemental identification up to $Z=55$ and isotopic identification for $Z=1-10$ when using the response of a single silicon detector. The project is now in the phase of building a demonstrator comprising about 200 telescopes.

1. Introduction

With the advent of exotic beams delivered by present and future accelerator facilities, it is a challenge for physicists to design detection arrays able to completely identify (atomic number and mass, energy) the nuclear reaction products, taking thus full advantage of these new beams. Indeed one of the present motivations for studying nuclear collisions is to improve the knowledge of the nuclear equation of state, and particularly of the density dependence of its symmetry energy term, E_{sym} [1, 2, 3]. In this aim, at moderate and low energies, dissipative collisions induced by exotic projectiles should provide new information on the neck-instabilities, and on the achievement of isospin equilibration, both directly depending on E_{sym} . In the same energy domain a study of the de-excitation properties of isotopic chains of compound nuclei, with complete isotopic identification of the emitted nuclei and of the final residue [4], will allow to test the N/Z dependence of the level density parameter; this will give unique information on the temperature dependence of E_{sym} . Pushing CN towards the drip lines will permit to explore decay modes that cannot be predicted by the Weisskopf theory (clustering, multifragmentation) and thus to test the validity domain of the basic assumptions of that theory. With an increased knowledge of the de-excitation of hot nuclei, when going around the Fermi energy, thermodynamical properties of multifragmenting nuclear systems (excitation energy, caloric curves) should be more accurately determined [5, 6], providing more precise values of

limiting temperatures. Measurements of fragment isotopic distributions should also permit to constrain E_{sym} .

At present time, the most powerful 4π arrays suffer from several drawbacks. INDRA [7], is composed of Ionisation Chamber-Silicon-CsI(Tl) telescopes and uses ΔE -E and light shape analysis to identify nuclei. It well identifies the atomic number of the charged products up to $Z\sim 60$, with a threshold of ~ 1 A MeV, but its isotopic identification is limited to $Z=6$. CHIMERA [8] is an ensemble of Silicon-CsI(Tl) telescopes which identifies nuclei through time of flight, ΔE -E and light shape analysis techniques. It has very low thresholds for mass identification, but much higher ones for Z-identification. CHIMERA gives isotopic identification, Z and A, up to $Z=13$ [9]. Even specific correlators such as LASSA [10], based on ΔE -E identification, have an isotopic separation only up to $Z=9$. The reader is sent to ref. [11] for a more exhaustive detector review. The unsurpassed nucleus identifiers are still spectrometers, which provide mass charge, energy and velocity of nuclei with a high resolution. They cover however a very small solid angle and cannot fully analyse many-body events, unless they are coupled to other detection arrays.

In this context a group of french and italian physicists studying nuclear dynamics and thermodynamics started, at the dawn of the century, a vigorous R&D aiming at obtaining isotopic identification up to mass 50 over a large solid angle. The main idea was to examine the detailed shape of the current signal created in a silicon detector by the passage of a charged particle, by sampling it with a fast ADC. This group later became the FAZIA Collaboration, which nowadays comprises about 60 physicists from France, Italie, Poland, Romania and Spain.

2. The FAZIA telescope

FAZIA is intended to work for studying reactions from the Coulomb barrier up to 100 A MeV. It was thought as a 4π array comprising a large number (several thousands) of three-stage telescopes, two silicon detectors (Si1: 300 μm and Si2: 500 μm) followed by a CsI(Tl) scintillator readout by a photodiode. Gas detectors are avoided because of their mechanical size. The desired low identification thresholds are provided by pulse shape analysis (PSA) of the signals of the first silicon, with the help of time of flight measurement for very slow particles [12, 13]. In order to improve the performances of present arrays, a lot of work was performed on the response of CsI(Tl) scintillators and above all on that of silicon detectors.

2.1. Silicon detectors: the lessons of R&D

When one wants to use the shape of the signal created by a charged particle traversing a silicon detector of finite area, it is mandatory that the detector response be independent of the impact position. This implies that the field should be homogeneous in the bulk of the detector. An answer to this requirement is obtained by using n-type implanted silicon doped with phosphorus through neutron transmutation; this process provides silicon wafers with resistivity around 3000 $\Omega\cdot\text{cm}$ and resistivity fluctuations smaller than 4% FWHM (against 30% for standard silicon wafers). Another constraint is that particles must not cross the detector following a crystal axis or plane: as known for 50 years, detectors must be cut off-axis to avoid channeling effects which induce large fluctuations in the response to monoenergetic particles [14, 15]. Note that this constraint limits the angular aperture of a telescope; the FAZIA telescopes have a square area 2×2 cm^2 . They will be mounted between 1 and 1.2 m from the target. Finally the bias voltage on the detector is kept constant by permanently monitoring the reverse current and correcting the applied voltage.

We chose a reverse mounting so that particles enter through the low-field side of the detector, in order to maximize the shape differences between elements and isotopes [13]. However although in this last reference overbiasing detectors was recommended, we found that a better identification was obtained when using the detector depletion voltage, or even slightly less. A

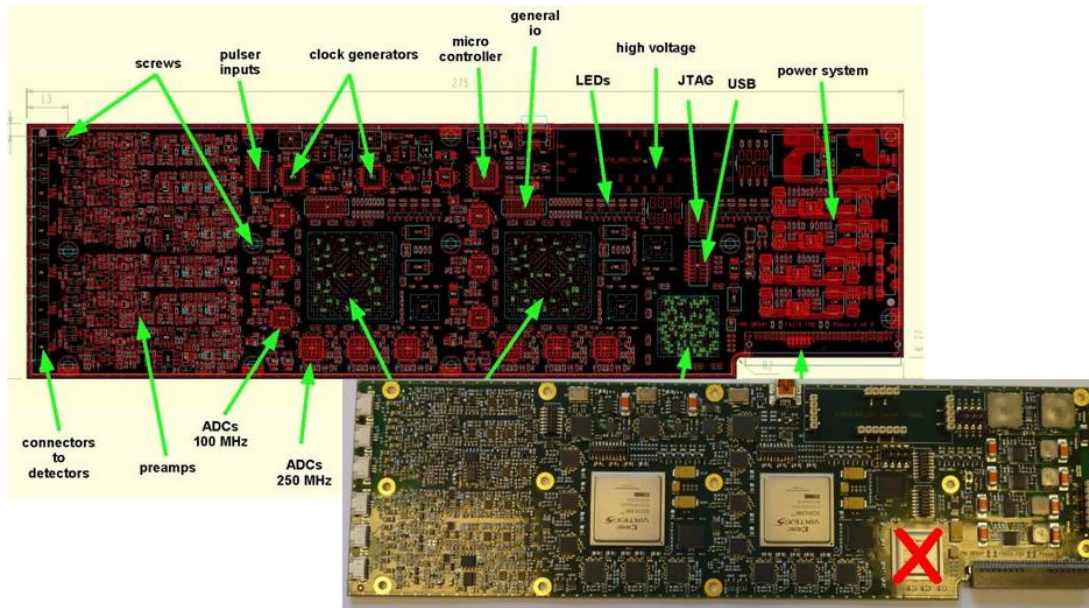


Figure 1. Pattern and photo of the prototype of the FEE board of FAZIA. The crossed small FPGA is removed in the final board.

compromise has still to be found between shape discrimination and good timing for time of flight.

2.2. The CsI(Tl) scintillators

The scintillator length was fixed to 10 cm, to make FAZIA operational up to 100 A MeV by stopping all light charged particles. Having such a length, the crystals are tapered to keep the same angular aperture at both ends. In order to favor scintillation efficiency for heavy ions, we chose a Tl concentration of ~ 2000 ppm [16]. The light response and resolution, as well as its homogeneity along the detector length were improved by wrapping the crystals with a highly reflective material, 3M VikuityTM ESR [17]. The CsI(Tl) are coupled to 2×2 cm² photodiodes.

2.3. Front-end electronics

The Front End Electronics board of FAZIA, designed at IPN Orsay, houses all the necessary modules for complete processing of the three detector signals of two telescopes. The prototype version is represented in figure 1. The detectors are connected to the preamplifiers, located on the board, by kapton strips. The preamplifiers are derived from the PACI [18], without the current output; the current signal, I, is now obtained in the FEE board by analogically deriving the charge signal, Q. The gain on the charge output is 2 mV/MeV.

Each signal is sent to a fast ADC (see table 1), apart from the Q signal of Si1 which is processed twice, with a high gain for light particles and fragments, and with a low gain for heavier ions, in order to improve PSA and Time of Flight in both cases (see sect. 3.1). Thus a FEE board comprises 6×2 14 bit ADC's. The high voltages for the two silicon detectors are built up locally in the FEE card and are individually controlled (section 2.1); the card performs the voltage compensation due to reverse current. One FPGA is in charge of a preprocessing of all signals for each telescope. It stores and reads out the Q and I waveforms. It gives a zero-level trigger which signals that the *telescope* was hit. It then provides a precise value of the energy deposited in Si1, Si2 and CsI(Tl)+PD by means of trapezoidal filters. The FEE card also holds one pulser for linearity calibration purpose and clocks to synchronize the different signals.

Table 1. Characteristics of the fast ADC’s for processing the different signals of the silicon detectors and of the photodiodes. E range indicates the full scale energy range.

Detector	Q signal			I signal	
	E range	sampling rate	resolution	sampling rate	resolution
Si1	250 MeV 4 GeV	250 Ms/s 100 Ms/s	14 bits 14 bits	250 Ms/s	14 bits
Si2	4 GeV	100 Ms/s	14 bits	250 Ms/s	14 bits
CsI(Tl) + PD	4 GeV	100 Ms/s	14 bits		

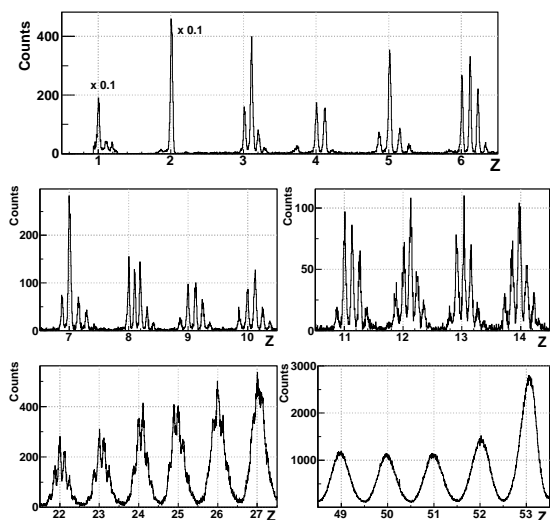


Figure 2. Distribution of particle identification function from a ΔE -E map between the Si1 and Si2 signals. From [19].

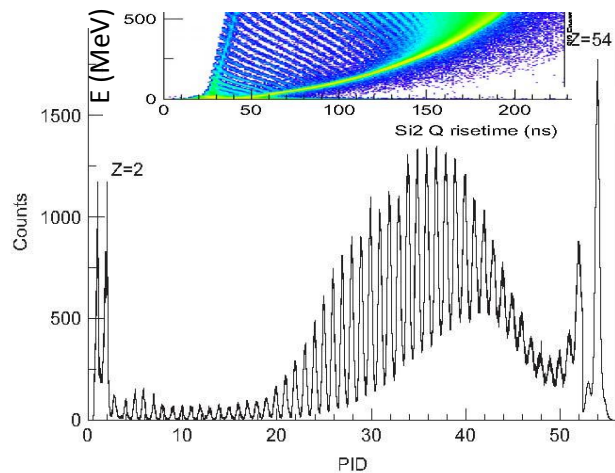


Figure 3. Particle identification obtained with the PSA method “E vs I_{max} ” in the second silicon alone. The inset shows the low energy part of the E vs τ_Q map for the same detector. Adapted from [19].

All information from the FPGA is transmitted to the acquisition system through a block card (section 4), the connector between both cards is visible on the low rhs of the photo.

3. Performances

3.1. Particle identification

We found that improving the qualities of the silicon detectors of the telescope also greatly enlarged the isotopic identification when using the ΔE -E method for Si1 vs Si2 responses. Figure 2 shows that masses are separated for Z up to 23 with this technique. We have found isotopic identification on the same mass range when using the ΔE -E method with (Si1+Si2) vs CsI(Tl) [19].

Identifying nuclei stopped in one silicon implies using two parameters provided by this single detector. One of these is the measured energy of a particle; for the second we chose either the rise time of the charge signal, τ_Q , or the maximum amplitude of the current signals (I_{max} or E/I_{max}). The Particle IDentification (PID) data presented in figure 3 were obtained with a detector for which the latter method was more performant, and Z identification is observed up to Z=54 [19]; in that case we performed PSA on the second silicon, in which most of the produced nuclei

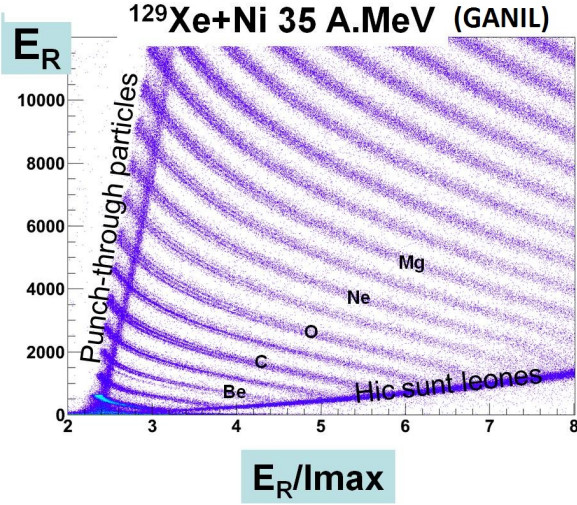


Figure 4. PSA: E vs E/I_{max} for particles produced in a 35 A MeV $^{129}\text{Xe}+^{58}\text{Ni}$. The full energy range of the ordinate axis is 700 MeV.

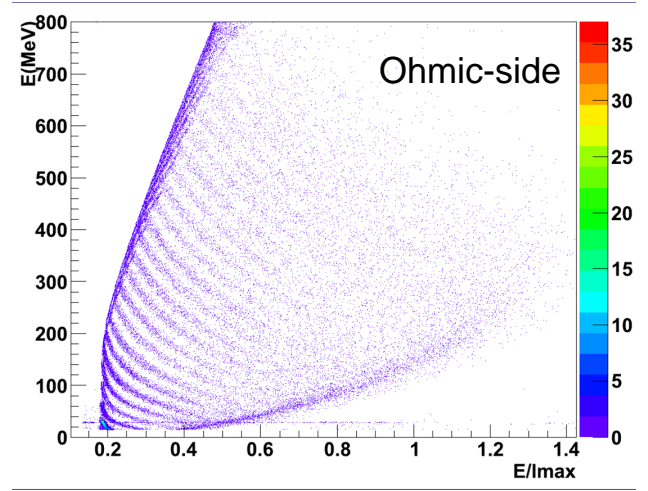


Figure 5. PSA: E vs E/I_{max} for particles produced in a 35 A MeV $^{129}\text{Xe}+^{58}\text{Ni}$ and detected in a DSSSD.

were stopped. Indeed figures 2 and 3 were obtained with the same telescope detecting nuclei produced in 35 A MeV $^{129}\text{Xe}+^{124}\text{Sn}$ reactions. The $306\mu\text{m}$ second silicon¹ was exceptionally good, having a resistivity $\rho = 3000 \Omega\cdot\text{cm}$ with a FWHM of the ρ distribution across the detector of 0.6% [20]; it was biased 3% above the depletion voltage. Figure 3 also shows that no mass identification is visible, even for the lightest elements. This is in disagreement with some of our results, where isotopes were seen for Z up to $Z=7-8$, see figure 4 and ref [15]. This discrepancy was attributed to the gain of the preamplifier, which was 3 times larger for the data of figure 4 than for those displayed in figure 3. This led us to adopt two gains for the coding of the energy signal of the first silicon detector of each FAZIA telescope.

3.2. Foreseen possible improvements

In view of possible developments aiming at an increased granularity, we have tested the PSA of the response of Double Sided Strip Silicon Detectors (DSSSD). The map displayed in figure 5 was obtained with a $500\mu\text{m}$ nTD silicon, with 16 strips on each side. Particles entered through the low-field (ohmic) side. Same results were obtained when taking signals from the P-side or the ohmic-side. The figure shows that elements are identified with resolution and range similar to those of the other detectors.

Another solution which is thought of, because it would save quite an amount of money for the 4π array, is to replace the FAZIA modules at backward angles (past 90° in the laboratory) by Single Chip Telescopes, SCT. This arrangement suppresses one electronic channel, because the silicon detector preceding the CsI(Tl) can be used both as a detector and as a photodiode for the scintillator light readout. SCT's were tested during the FAZIA R&D and, using suitable algorithms, it was shown that performances comparable to those of a FAZIA telescope were obtained for H and He isotope identification, whereas they are not as good for light fragments, particularly at low energy [21]. For this reason SCT should be positioned at angles where only few and light fragments are emitted.

¹ this telescope comprised two $300\mu\text{m}$ silicon, it was thus not a "standard" FAZIA telescope

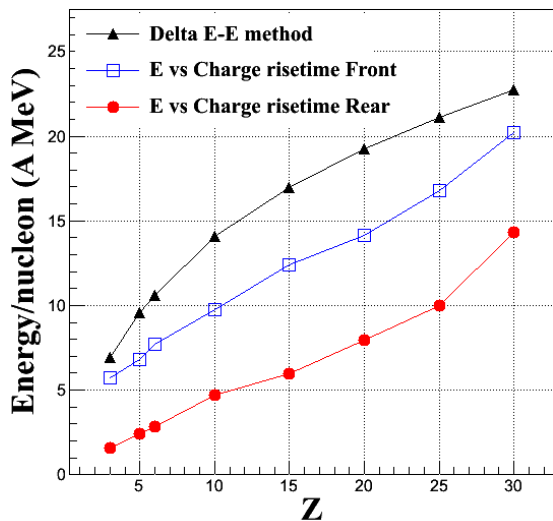
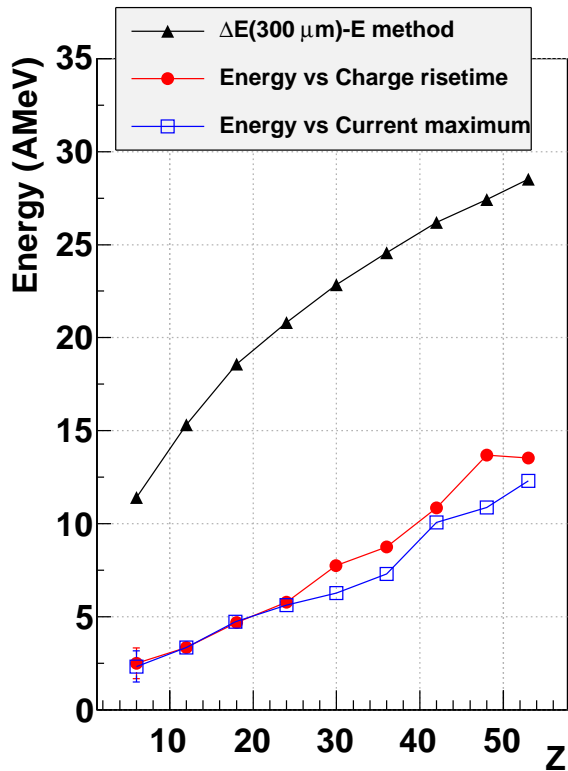


Figure 6. Energy thresholds for Z-identification. Black lines and black triangles refer to the energy necessary to punch through a 300 μm silicon for $\Delta\text{E-E}$ identification. Left part: silicon with resistivity FWHM 0.6%, using two PSA methods, low-field entrance (from [19]). Right part: silicon with resistivity FWHM 4%; full circles low-field entrance, open squares high field entrance. (from [22])

3.3. Energy identification thresholds

We can observe in the inset of figure 3, showing part of a E vs τ_Q map, that at low energy nuclei can not be identified with a PSA method: all ridge lines converge into a single locus. We quantified the energy threshold for Z-identification, using a factor of merit, $FoM = (\langle PID_2 \rangle - \langle PID_1 \rangle) / (FWHM_1 + FWHM_2)$ where $\langle PID_i \rangle$ are the average PID values for nuclei Z_1 and $Z_2 = Z_1 + 1$, and the $FWHM_i$ are the full widths at half maximum of the PID peaks. Two elements are considered as well separated when $FoM > 0.7$.

In figure 6 the thresholds so determined are plotted in several cases, and compared to those imposed by the punching-through of a 300 μm silicon when using a $\Delta\text{E-E}$ method. A general remark is that PSA does significantly lower the Z-identification thresholds. The left part of the figure corresponds to results obtained for the highly homogeneous silicon of figure 3, when particles enter the detector through the low field side. The two PSA methods, E vs τ_Q and E vs I_{max} , give close thresholds, from 2 A MeV for $Z=6$ to 6 A MeV for $Z=30$ and 11 A MeV for $Z=50$. The right part of the figure displays data obtained for a less homogeneous detector (4% ρ -FWHM). In that case we compared the thresholds obtained, in the same conditions, when particles enter through the low or high field side [22]. We firstly note that much lower thresholds are measured when the detector is reverse mounted, confirming that this is the best choice when using PSA techniques. Second, if we compare the thresholds obtained for rear entrance in the two detectors (left and right pictures), we note the influence of the resistivity homogeneity: they are about 1.5-2.5 times lower for the ρ -homogeneous detector.

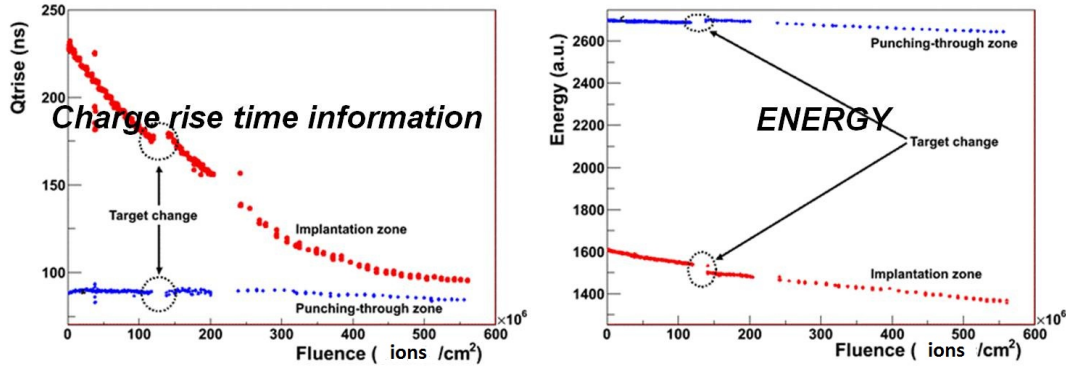


Figure 7. Evolution of τ_Q and of the measured energy with the number of detected Xe ions. In the “implantation zone”, the ions are stopped in the detector. (from [23])

3.4. The problem of radiation damages

As soon as silicon detectors started to be used, it was observed that the crystal structure, and thus the detector response, was degraded by the detected particles, particularly when very heavy ions stop in a detector. This raises problems when using silicon detectors with heavy beams, at angles where they detect the high rate elastic scattering events. Any degradation of the response of the detector becomes unacceptable when one makes use of pulse shape analysis. A specific study of the radiation damages was undertaken during our R&D, and we could reach quantitative conclusions. We irradiated a 300 μm silicon detector with 35 A MeV Xe ions. Collimators and degraders allowed to define a zone in which the ions punch through the detector and a second one where the ions were stopped [23].

Up to 6×10^8 ions/cm² ions hit the detector. Minor effects on the measured values of E and τ_Q were observed when the Xe ions crossed the silicon. Conversely dramatic differences were found on both parameters when the ions stopped in the detector. At maximum fluence the energy has decreased by 20% whereas τ_Q dropped by a factor 2.5.

These observations make delicate the use of very heavy ions for FAZIA experiments, particularly at low energy where the grazing angle is large. It would be interesting to test in the future if some annealing process could allow to recover acceptable functioning of the damaged silicon detectors.

4. FAZIA demonstrator

The FAZIA project is presently in the phase of building a demonstrator. This demonstrator will be an array of 192 telescopes arranged in 12 blocks of 16. The final (i.e. for the future 4π array) electronics and mechanical solutions are adopted. We feel useful to minimize the detector-preamplifier-digitizer distances, therefore the FEE is located inside the vacuum chamber². The electronic arrangement is represented in figure 8. The 8 FEE boards necessary to treat the 16 telescopes are piled up and all connected to a single block card. The block card connects the FEE to the acquisition system by means of an optical fiber insuring the air-vacuum feed-through. Through this fiber it receives a 48 V voltage out of which it builds the photodiode high voltages and different low voltages which are transmitted to the FEE boards to generate the low voltages for preamplifiers and the high voltages for silicon detectors. It also houses one flash ADC to receive the accelerator RF signal which will be used for time of flight measurement. Due to the

² for all test results presented in the previous section, only the preamplifiers were in vacuum, implying several meters of differential cable between PA and FEE

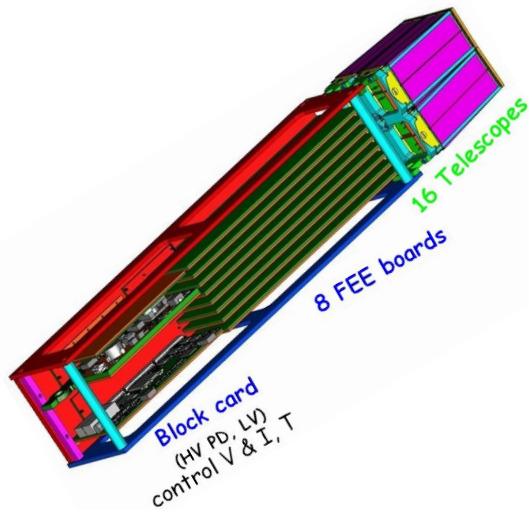


Figure 8. Mechanical arrangement of a FAZIA block.

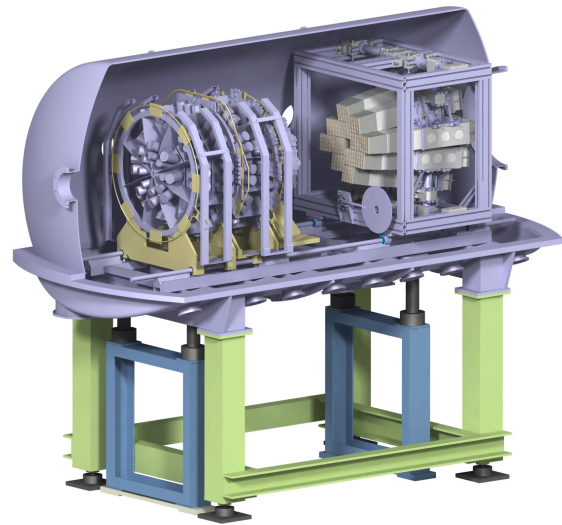


Figure 9. Mechanical coupling of the 12 blocks of the FAZIA demonstrator (right) with rings 6-17 of INDRA inside the INDRA vacuum chamber. (courtesy of Y. Merrer, LPC Caen).

compacity of the electronics, an efficient cooling system is required; all FEE and the block cards lean on a copper plate in which circulates a water-antifreeze liquid.

A completely equipped block will be tested at LNS (Catania) at the end of 2012. The demonstrator is expected to be ready in 2014. It will first be coupled to existing arrays such as INDRA (GANIL-SPIRAL2), CHIMERA (LNS-FRIBS), GARFIELD (LNL-SPES) in order to get new and improved physics results. The modularity of the blocks allows to mount them in different mechanical configurations, depending on the experiment. For instance dissipative collisions will be studied by arranging the blocks in a coplanar belt at intermediate angles. Other planes are to study fusion reactions between light nuclei. In that aim the 12 FAZIA blocks will replace the forward rings of INDRA, as shown in figure 9. See [24] for more details on some proposed letters of intent.

References

- [1] Baran V, Colonna M *et al.* 2005 *Phys. Rep.* **410** 335–466
- [2] Bao-An Li, Lie-Wen Chen *et al.* 2008 *Phys. Rep.* **464** 113–281
- [3] Rivet M F 2009 *Lecture given at the Joliot-Curie school 2009* (Preprint <http://hal.in2p3.fr/in2p3-00584498/fr/>)
- [4] Marini P, Rivet M F *et al.* (INDRA collaboration) 2010 *Proc. II Int. Workshop on Compound Nucleus Reactions* vol 2 (EDP Sciences) p 04003
- [5] Viola V E and Bougault R 2006 *Dynamics and Thermodynamics with nuclear degrees of freedom* (*Eur. Phys. J. A* vol 30) ed Chomaz P, Gulminelli F *et al.* (Springer) pp 215–226
- [6] Borderie B and Rivet M F 2008 *Prog. Part. Nucl. Phys.* **61** 551–601
- [7] Pouthas J, Borderie B *et al.* 1995 *Nucl. Instr. and Meth. in Phys. Res.* **A 357** 418
- [8] Pagano A, Alderighi M *et al.* (Reverse collaboration) 2004 *Nucl. Phys.* **A 734** 504–511
- [9] Lombardo I, Agodi C *et al.* 2011 *Phys. Rev.* **C 84** 024613
- [10] Davin B, de Souza R *et al.* 2001 *Nucl. Instr. Meth. in Phys. Res.* **A 473** 302–318
- [11] de Souza R T, Le Neindre N *et al.* 2006 *Dynamics and Thermodynamics with nuclear degrees of freedom* (*Eur. Phys. J. A* vol 30) ed Chomaz P, Gulminelli F *et al.* (Springer) pp 275–291
- [12] Pausch G, Bohne W *et al.* 1994 *Nucl. Instr. Meth.* **A 349** 281–284

- [13] Mutterer M, Trzaska W H *et al.* 2000 *IEEE Trans. Nucl. Sc.* **47** 756–759
- [14] Bardelli L, Bini M *et al.* (FAZIA Collaboration) 2009 *Nucl. Inst. Meth. in Phys. Res.* **A 605** 353–358
- [15] Bardelli L, Bini M *et al.* (FAZIA Collaboration) 2011 *Nucl. Inst. Meth. in Phys. Res.* **A 654** 272–278
- [16] Degerlier M, Sambri S *et al.* (FAZIA Collaboration) 2008 *LNL Ann. Report* 56 (*Preprint* www.lnl.infn.it/~annrep/index.htm)
- [17] Bédérède D, Bougamont E *et al.* 2004 *Nucl. Inst. Meth. in Phys. Res.* **A 518** 15–18
- [18] Hamrita H, Rauly E *et al.* 2004 *Nucl. Inst. Meth. in Phys. Res.* **A 531** 607–615
- [19] Carboni S, Barlini S *et al.* (FAZIA Collaboration) 2012 *Nucl. Inst. Meth. in Phys. Res.* **A 664** 251–263
- [20] Bardelli L, Poggi G *et al.* (FAZIA Collaboration) 2009 *Nucl. Inst. Meth. in Phys. Res.* **A 602** 501–505
- [21] Pasquali G, Barlini S *et al.* (FAZIA Collaboration) 2012 *Eur. Phys. J* **A submitted**
- [22] Le Neindre N, Bougault R *et al.* (FAZIA Collaboration) 2012 *Nucl. Inst. Meth. in Phys. Res.* **A submitted**
- [23] Barlini S, Carboni S *et al.* (FAZIA Collaboration) 2012 *Nucl. Inst. Meth. in Phys. Res.* **A submitted**
- [24] Casini G *et al.* (FAZIA Collaboration) 2011 *Letter of Intent at Spiral2 week* (*Preprint* <http://pro.ganil-spiral2.eu/events/sp2/spiral2week-2011/presentations/sac-6/>)